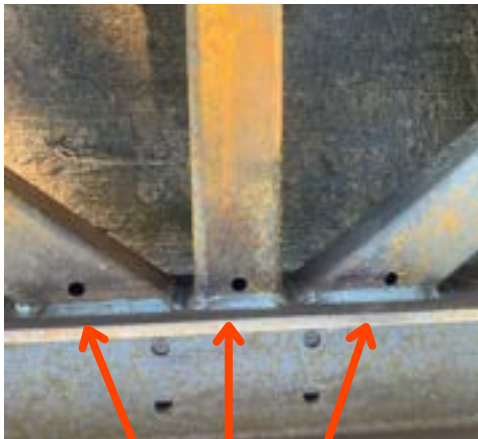
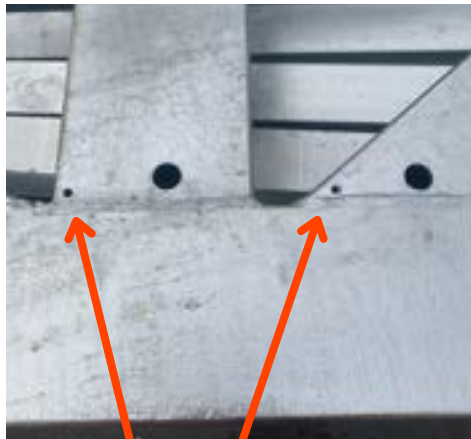


# TRUSS FABRICATIONS

The purpose of this information sheet is to provide specific guidance targeted at areas within the fabrication process that will lead to improvements in the finished product. It is our aim to educate and provide awareness that will save our customers money from correcting potential design flaws. A common error encountered is incorrect hole position in truss fabrications. As shown below holes are frequently positioned on the face of the fabrication and this is in fact 90 degrees out. They should ideally be in line with the frame.



These holes should be inline with the frame.

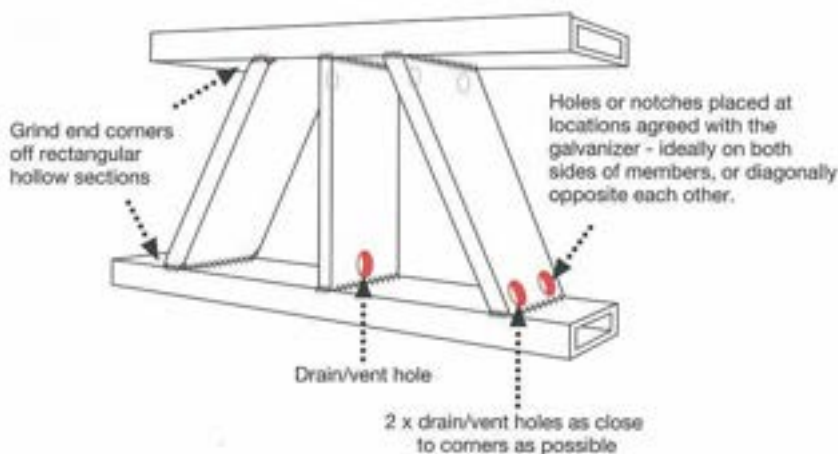


Extra holes will be required.



Poor position can lead to zinc runs.

The diagram below illustrates the correct positioning of holes and suggests the options that can be used.



Good inline hole position

Should you wish any further information please do not hesitate to contact one of our experts on Elgin – 01343 548855 or Cumbernauld – 01236 731444 or alternatively email any enquiries direct to our technical team at [design@higalv.co.uk](mailto:design@higalv.co.uk)